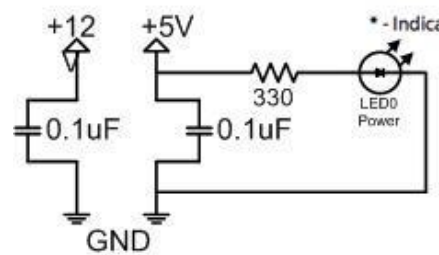


- Spindle Direction
- Limit Z-Axis\*
- Variable Spindle PWM
- Limit Y-Axis\*
- Limit X-Axis\*
- Stepper Enable/Disable
- Direction Z-Axis
- Direction Y-Axis
- Direction X-Axis
- Step Pulse Z-Axis
- Step Pulse Y-Axis
- Step Pulse X-Axis



\* - Indicates input pins. Held high with internal pull-up resistors.

